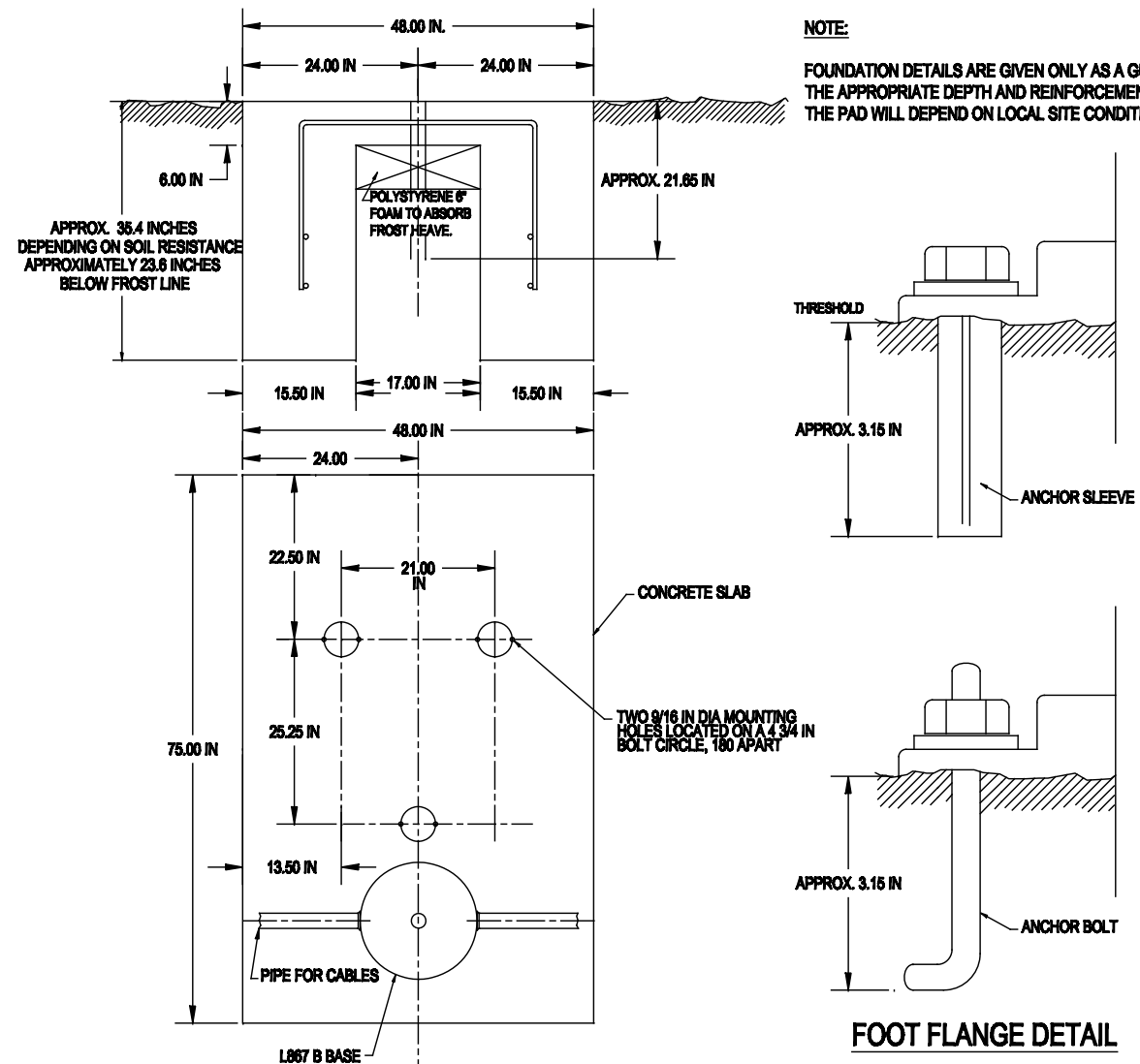
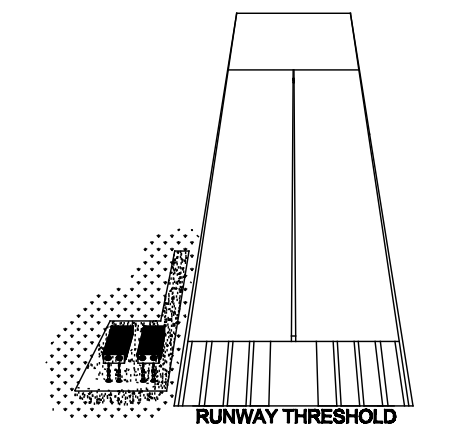


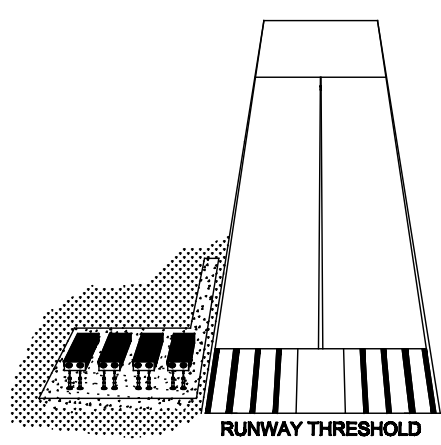
PAPI TYPICAL INSTALLATION



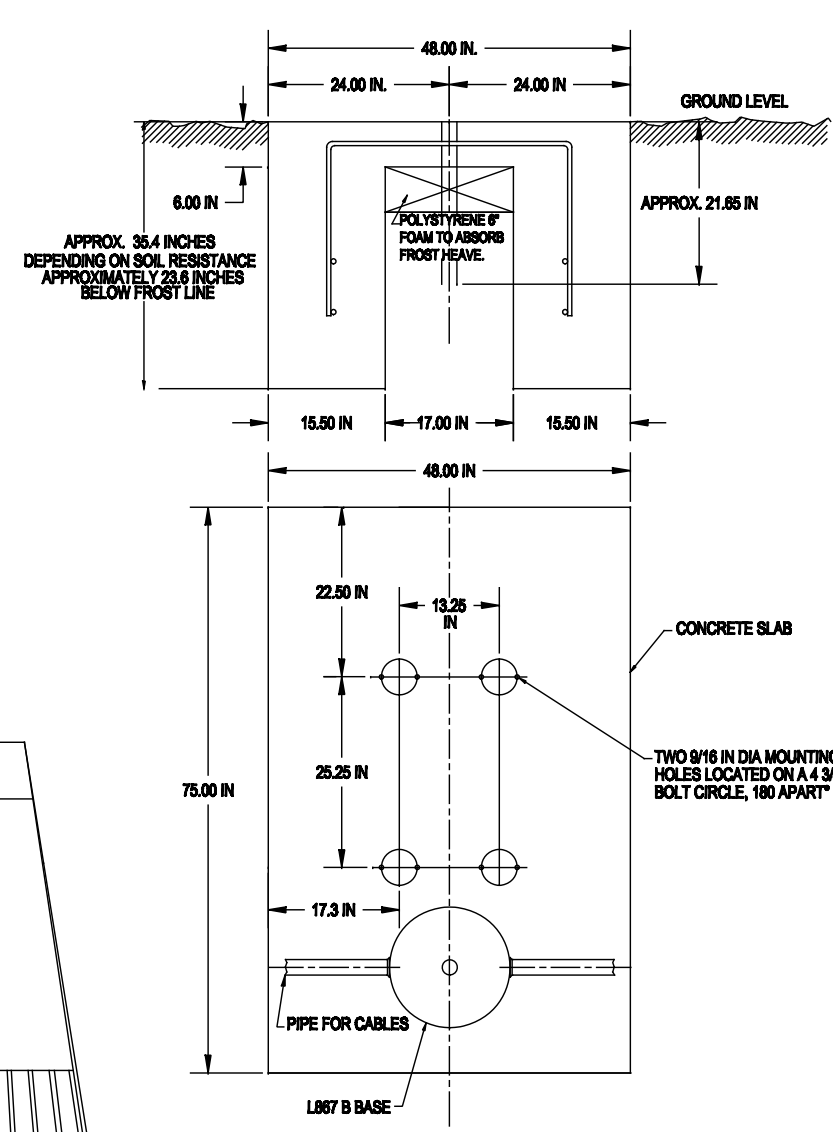
PAPI 3 LEG FOUNDATION DETAIL



FOR L880 STYLE B TWO BOX SYSTEM



FOR L880 STYLE B FOUR BOX SYSTEM



PAPI 4 LEG FOUNDATION DETAIL

- NOTES:
1. ADB AIRFIELD SOLUTIONS PART 44A5860/XXXX OR EQUAL.

**CAUTION:**  
THIS DRAWING IS ONLY INTENDED FOR USE AS GENERAL AIRFIELD SYSTEM DESIGN GUIDANCE. THE DESIGNER MUST VERIFY DESIGN WITH LOCAL CODES AND VARYING CHARACTERISTICS FOR EACH UNIQUE AIRFIELD APPLICATION.

CONTROLLED COPY			
Unauthorized duplication of this document in whole or part is prohibited. Initialed in RED ink below indicates authorized copy.			
INITIAL & DATE:			
<b>ADB</b>			
ADB Airfield Solutions P.O. Box 30829 Tel: (614) 861-1304 977 Gahanna Parkway Fax: (614) 864-2069 Columbus, OH 43230			
DRAWING TITLE: PAPI STYLE B MASTER AND SLAVE TYPICAL INSTALLATION L-880/L-881			
B	3708	UPDATE TITLE BLOCK	DTR 13AUG12
A	---	PRODUCTION RELEASE	LWH 18MAY04
REV	EDD	REVISION DESCRIPTION	DRAWN BY REV DATE
ASSOCIATED CHANGES:		DRAWN BY: LWH	DRAWN DATE: 18MAY04
Information contained on this drawing is to be used expressly in accord with purpose for which it was submitted. Any disclosure of this information is strictly prohibited except as ADB Airfield Solutions, LLC. may otherwise agree in writing. Copyright © 2010 ADB Airfield Solutions.			
SCALE: N/A		SHEET NUMBER: 1 of 2	
DRAWING NUMBER: 117A0019			REV. B